

# CHANT

[www.chantengineering.com](http://www.chantengineering.com)



**CUT  
SWAGE  
TEST  
REEL  
CALIBRATE**

**MACHINERY FOR THE  
ROPE & RIGGING INDUSTRY**

*Around the Corner, Around the World...*

215.230.4260

[www.chantengineering.com](http://www.chantengineering.com)



## Horizontal, Vertical and Mobile Test Beds

### Horizontal Test Beds

All Chant Engineering Horizontal Test Beds come standard with fully enclosed hydraulically operated safety guards (ends, top, bottom) for operator safety. We manufacture standard capacity test beds from 1,000 lbs. up to 3.3M and above. We can customize any machine to your specifications, any length, any size or unique application.

### Vertical Test Beds

Chant Engineering manufactures Vertical Test Beds which are used for testing slings, lifting devices and chain hoists. We build vertical machines to perform both a static, and a dynamic test. The static test will pull to a load while the dynamic machine will not only pull to a load, but it will also keep a constant load on the specimen as it is exercised.

Chant also designs and builds these test machines:

- Break Test Machines
- Mobile Test Machines (open or fully enclosed)
- Pre-Stretch Test Beds
- Vertical Testing Towers
- Custom Testing Machines (to your specifications)

We also have a complete list of options you can select from to customize your machine.



Horizontal Test Bed



Vertical Test Bed



Mobile Test Bed

## Reeling Machines: Re-Reevers, Take-Up/Pay-Out, and Gantry Style Machines

Chant Engineering offers a variety of reliable Reeling Machines that are available in standard models based on weight, reel size capacities, reel widths, and height. All Chant reeling machines can perform take-up and pay-out.

Our experienced and knowledgeable design and engineering team can custom build any model for additional height, reel width requirements or custom applications.



Gantry Style Reeling Machine



Take-Up / Pay-Out Machine



Re-Reevers

## Wire Rope Grips

Chant's Wire Rope Grips are heavy duty, precision machined gripping devices, designed to grip wire rope from light to ultimate breaking loads. Our Grips work on any lay wire rope, and will hold regardless if the wire is greased, dirty, wet, tarred, plated, etc.

Each grip comes with a wide range of adapters and liners to accommodate different size wire rope.



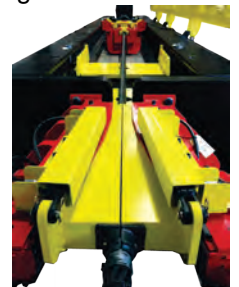
2-Position Mount



Bridle Mount



Front Flange Mount

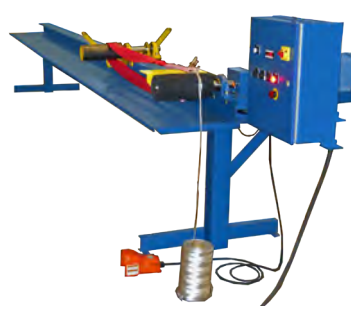


Wire Rope Grips

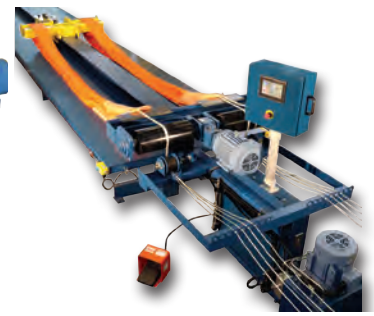
**Contact Your Chant Representative for a quote at 215.230.4260**

## GERRO™ Round Sling Machines: Large and Small Capacity

The GERRO™ Round Sling Machine is a high speed, heavy duty machine that is designed to manufacture multiple polyester round slings simultaneously.



GERRO™ Small Round Sling Machine



GERRO™ Large Round Sling Machine

### Features include:

- Easy-to-use touchscreen controls with preset menus.
- An adjustable movable head to allow any length sling to be made.
- Automatic tension force to make high capacity rounds slings quickly & easily.

## Swagers, Cutters, and Annealers

Chant is the Authorized Distributor for TALURIT™ Products in North America. Talurit products include: Swagers, Swaging Dies, Cutting Machines, Annealing Machines, TAL-X Flemish Eye Sleeves, Ferrules, Fittings, and more.

**Swagers:** A large range of swagers with capacity from 20MT up to 4200MT make it possible to swage aluminium ferrules for nominal wire rope up to 160mm (6 1/4") diameter and 6" flemish eye sleeves.

**Cutting Machines:** The cutting machines include basic hand cutters, manually operated hydraulic shears, fuse and tapering machines, and many different fully automatic cutting machines. All the cutting machines are mainly intended for cutting preformed wire rope.

**Annealing Machines:** The annealing machines cut the wire rope by annealing. The annealing machines are also available as manual and fully automatic machines.

We can also combine these units into a complete system, customized to specifically meet your needs.



LKA 28-PS Cutting Machine



600T Swager



AV 45 Annealing Machine

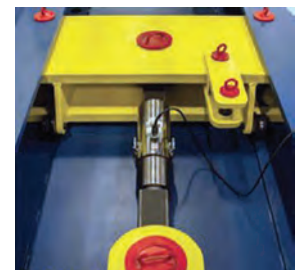


LK Cutting Machine

## Calibration Services and Machine Upgrades

Chant Engineering is a nationally recognized calibration facility with precision equipment, traceable back to the National Institute of Standards and Technology (NIST). Our equipment is calibrated to ASTM-E74, which allows us to calibrate your equipment to ASTM-E4 (ISO-7500) 3.3 million pounds in compression and 1.5 million pounds in tension.

We have proprietary data-capturing software used in the calibration process that helps us provide the highest levels of accuracy for your testing equipment. We offer yearly calibration, multiple machine/location discounts, as well as multi-year comprehensive calibration/maintenance contracts.



Calibration Services

We also have a free machine upgrade program with a long-term calibration agreement.

**24/7 Worldwide Calibration Service - Any Time, Any Where**



## Touch Screen Upgrades

Chant Engineering Touch Screens feature an easy-to-use operator interface for your testing machine which can be retrofitted on existing machines. The operator simply selects the desired load and the machine automatically tests the specimen to the setting. The on-screen display shows the current load, as well as a live graph of load vs. time. The touch screen will also display elongation, if the machine has that option.

Multiple touch screen operated machines can be linked to a network to allow for test certificates to be generated remotely. The touch screen can be used strictly for controls or it can interface with Chant's DataTEST™ Software to print certificates.

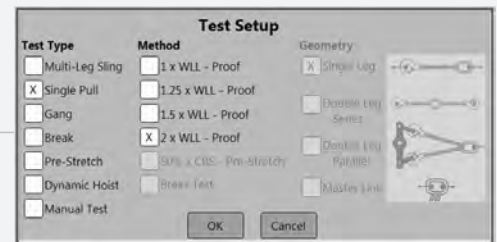
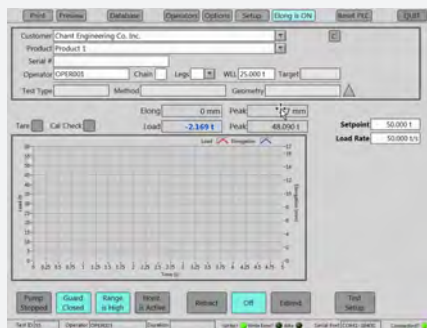


Touch Screen

## DataTEST™ TS Software

Chant Engineering DataTEST™ TS Software is a sophisticated, user-friendly Windows based data-logging program for testing machines. The software offers unrivaled ease of use, simple graphical-user interface, and several customizable features including real-time data acquisition, a sophisticated customer database, multi-leg sling testing capabilities, and output data available in several formats.

DataTEST™ TS Software improves productivity and automates several time-consuming steps necessary to generating test certificates. All calibration long-term contracts come with free Chant DataTEST™ TS Software and updates, ensuring your machine is cutting edge.



## Load Cells and Load Links

Chant is the Authorized Distributor for Dynamic Load Monitoring (DLM) Products in North America. DLM's product line includes: Standard Tensile Links, Telemetry Links, Compressive Cells, and Shear Pin Load Cells.



We offer the SL-2.0 Standard Tensile and the TL-2.0 Telemetry Tensile Load Links in the following sizes:

- 1 Short Ton
- 2 Short Ton
- 5 Short Ton
- 12 Short Ton
- 25 Short Ton
- 35 Short Ton
- 50 Short Ton
- 80 Short Ton
- 100 Short Ton
- 120 Short Ton
- 150 Short Ton
- 200 Short Ton



Load Links

Ask about Load Links and Load Pin packages.

Note:

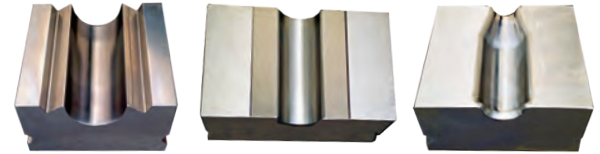
- \*Ranges 2T to 5T Supplied with Light Weight Carry Case
- \*Ranges 12T to 50T Supplied with Rugged Storm/Pelican Cases
- \*Ranges 80T to 300T Supplied in Wooden Storage Cases
- \*All Load Cell Packages are Supplied Calibrated to the National Standard

**Heavy Duty, Quality Machinery for the Wire Rope & Rigging Industry**

## Dies, Die Holders, and Insert Die Holders

Chant Engineering is the North American distributor of TALURIT™ products. Ferrules, sleeves, and sockets require individual press dies depending on material and dimension. TALURIT™ manufactures standard and special dies to cater to all possible swaging demands.

Our dies are manufactured from high quality steel for optimum strength and service life. In addition to our comprehensive standard range we are also able to supply special dies to customer specification.



Dies

## Ferrules and Flemish Eye Sleeves

TALURIT™ Ferrule selection is based on: rope grade, diameter of the wire rope, fill factor or metallic cross-sectional area factor and wire rope core (i.e. fibre core (FC) or steel core).

Ferrules in different materials have been developed to cater to a variety of needs and applications. Aluminum, carbon steel, copper, and stainless steel are most common.

TALURIT™ TAL-X Flemish Eye Sleeves are made in accordance with the standards and processes adopted by TALURIT™ AB to ensure the highest quality product.

TAL-X sleeves are black oxidized and available from 1/4" to 2". All TALURIT™ Flemish Eye Sleeves are marked with: TAL-X, the sleeve size, and a code for traceability. Testing Includes: hardness, chemical analysis, microstructure evaluation, ductility, and flattening (to check for cracks). For additional conformance, sleeves are independently verified by a third-party test lab.



Available in Copper, Carbon Steel and Aluminum

## Thimbles

Chant Engineering is the authorized North American distributor for Friedrich Höppe GmbH thimbles. Thimbles are painted black to minimize rust. These high quality thimbles have been made by Friedrich Höppe in Germany for over 100 years.

The DIN3090 Galvanized Thimbles are available in sizes 4 and 6 and are electro galvanized; Sizes 8 to 80 are hot dipped galvanized; in accordance with EN 13411-1.

The DIN3091 Black Thimbles are available in sizes 8-14 and 44 are DIN 3091 issue 11-1976; Sizes 16-80 are DIN 3091 issue 12-1988.



Black Oxidized & Galvanized Thimbles

## Hand Tools and Accessories

Chant Engineering also offers a wide-range of hand tools for the splicing and cutting of wire rope, electrically or hydraulically operated. Tools include: a portable rigger's forming vice, crimping tool, sailor's tongs, and portable swagers. Ask about our other accessories and spare parts.



## A Family Tradition Known For Quality and Performance

Since 1970, Chant Engineering has been family owned and operated. Chant equipment is extremely heavy-duty and proven over years of rugged, real world industrial and military environments. Our machines are built in the United States to the highest quality standards.

Pictured to the right are 3 Generations of Chant family members. L-R, Andrew Chant (Intern), Jim Chant (Founder & CEO, Retired), Phil Chant (President), and Mason Chant (Intern).



**We are the North American Distributor for TALURIT, DLM & Friedrich Hoppe**

# **Your Trusted Partner Since 1970**

**Horizontal, Vertical & Mobile Test Beds**

**Reeling Machines**

**Wire Rope Fittings & Grips**

**Swagers, Swaging Dies, Cutting & Annealing Machines**

**Ferrules, Flemish Eye Sleeves & Thimbles**

**Round Sling Machines**

**Load Cells, Links, Pins & Monitoring Equipment**

**Calibration Services**

**Touch Screen Controls**

**DataTEST© Software**

**On-Site Training**

**On-Site Troubleshooting**

**Preventative Maintenance**

**Upgrades to Existing Machines**

**and more...**

**CHANT**

*Chant Engineering Co., Inc.*



**59 Industrial Drive  
New Britain, PA 18901, USA**

**215.230.4260**

**f: 215.230.4261**

**sales@ChantEngineering.com**

