



Talurit's ferrule selection is based on: the rope grade, the diameter of the wire rope, the fill factor or metallic cross-sectional area factor, the wire rope core, i.e. fibre core (FC) or steel core (IWRC= independent wire rope core).

Ferrules in different materials have been developed to cater for a variety of needs and applications. Aluminium, carbon steel, copper, and stainless steel are most common.

All of Talurit's ferrules are produced seamless for added safety. All aluminium ferrules from size 8 and upwards are fully traceable (ISO 9001) and marked with size, type and manufacturing batch number.

■ The T-ferrule is the original ferrule design, intended for galvanized or bright wire ropes.



■ The TK-ferrule is a prolonged and tapered T-ferrule to reduce the risk of load snagging



■ The TKH-ferrule is based on a TK-ferrule but has an inspection hole to ensure the short end of the wire rope is correctly positioned after swaging.



■ The UM-ferrule is referred to as Talurit's ULTRAGRIP™ special performance cylindrical ferrule. It becomes smaller in diameter after pressing than the T-ferrule.



■ The K-ferrule also referred to as Talurit's Konit ferrule is a prolonged and tapered UM-ferrule



■ The TS-ferrule is just simply a shorter version of the T-ferrule



■ The R-ferrule is the round style and is intended to be pressed on single wire ropes - for instance on preventer wires or used as an end stop.



Chant Engineering is the North American Distributor for



ALUMINUM FERRULES SIZES AVAILABLE (mm)

T	TK	TKH	UM	K	TS	R
1	8	8	9	9	8	1.5
1.5	9	9	10	10	9	2
2	10	10	11	11	10	3
2.5	11	11	12	12	11	4
3	12	12	13	13	12	5
3.5	13	13	14	14	13	6
4	14	14	16	16	14	6.5
4.5	16	16	18	18	16	7
5	18	18	20	20	18	8
6	20	20	22	22	20	9
6.5	22	22	24	24	22	10
7	24	24	26	26	24	11
8	26	26	28	28	26	12
9	28	28	30	30	28	13
10	30	30	32	32	30	14
11	32	32	34	34	32	16
12	34	34	36	36	34	18
13	36	36	38	38	36	20
14	38	38	40	40	38	22
16	40	40	42	42	40	24
18	42	42	44	44	42	26
20	44	44	46	46	44	28
22	46	46	50	48	46	30
24	48	48	54	50	48	32
26	50	50	58		50	
28	52	52	62		52	
30	54	54	66		54	
32	56	56	70		56	
34	58	58	74		58	
36	60	60	78		60	
38			82			
40			90			
42			105			
44			110			
46						
48						
50						
52						
54						
56						
58						
60						
62*						
66						
7*						
74*						
78*						
82*						
94						
102						
116**						
128						

* Available upon request

**For T116 minimum filling factor shall be 0.53

**For more information or detailed specifications regarding Talurit's Ferrule Securing Instructions please contact Jason Ruby-
jruby@chantengineering.com**



Talurit's ferrule selection is based on: the rope grade, the diameter of the wire rope, the fill factor or metallic cross-sectional area factor, the wire rope core, i.e. fibre core (FC) or steel core (IWRC= independent wire rope core).

Ferrules in different materials have been developed to cater for a variety of needs and applications. Aluminium, carbon steel, copper, and stainless steel are most common.

All of Talurit's ferrules are produced seamless for added safety. All aluminium ferrules from size 8 and upwards are fully traceable (ISO 9001) and marked with size, type and manufacturing batch number.

Stainless Steel Ferrules

- Stainless steel ferrules (INOX) are used in fields with high demand for resistance to corrosion and design, (i.e. long term use in salt water, use in nuclear power plants, architecture etc.).

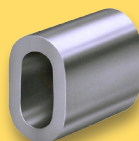
Only the material AISI 316 is used due to the requirements above. Instructions how to use, select and press are available on request.

INOX, stainless steel ferrules come in a cylindrical, oval shape made of seamless extruded tube.

The shape is comparable with the T-ferrule but uses other type of press dies and also different diameters after pressing.

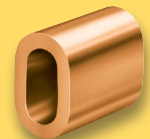
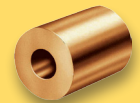
NOTE!

Not for lifting purposes.



Copper Ferrules

- RCU is a copper ferrule for use with wire ropes made of stainless steel.
- TCU is also for stainless steel wire rope to avoid galvanic corrosion. Pressing of these ferrules requires approximately 25% higher pressure than the corresponding aluminum alloy T-ferrule.
- TCUK is the same as the TCU only with larger sizes.

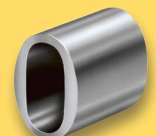
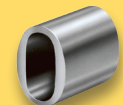


Carbon Steel Ferrules

- STS-ferrules have an oval, cylindrical shape similar with the T-ferrule.

(STS-42 through STS-80 are galvanized for better corrosion protection)

- ST-ferrules have a slim design to allow lower pressure when pressing the clamp.
- SLST-ferrules also have a slim design but are only made in larger sizes.



**For more information or detailed specifications regarding Talurit's Ferrule Securing Instructions please contact Jason Ruby-
jruby@chantengineering.com**