

**General Information**

To assure the highest quality product, all TALURIT™ TAL-X Flemish Eye sleeves are designed with corrosion protection and are made in accordance with the standards and processes adopted by Talurit AB.

TAL-X sleeves are black oxidized and available from 1/4" to 6". All TALURIT™ Flemish Eye sleeves are marked with: TAL-X, the sleeve size, and a code for traceability.

Testing includes: hardness, chemical analysis, microstructure evaluation, ductility, and flattening (to check for cracks). For additional conformance, sleeves are independently verified by a 3rd party test lab. You can request Talurit's instructions on how to make flemish eye terminations reach the expected efficiency level.

Imperial system

TALURIT™ TAL-X Flemish Eye Sleeves are recommended for use with imperial sizes 6x19 or 6x37, IPS or XIP (EIP), XXIP (EEIP), RRL, FC, or IWRC wire rope. The imperial system has also been tested and approved according to the requirements in EN 13411-3. (Not applicable on rotation resistant wire ropes.)

A metric system is also available, please contact us to request the metric splicing chart.

Please refer to TALURIT™ System Securing Instruction for further information and for matching wire rope to the right size flemish eye sleeve.

Chant Engineering is the exclusive North American Distributor for Talurit™ products.

Black Oxidized
(Sizes up to 6")**Applications**

Carbon steel ferrules are typically used when corrosion, higher temperature and special wear and tear environments are demanded.

They are also used in cold environments.

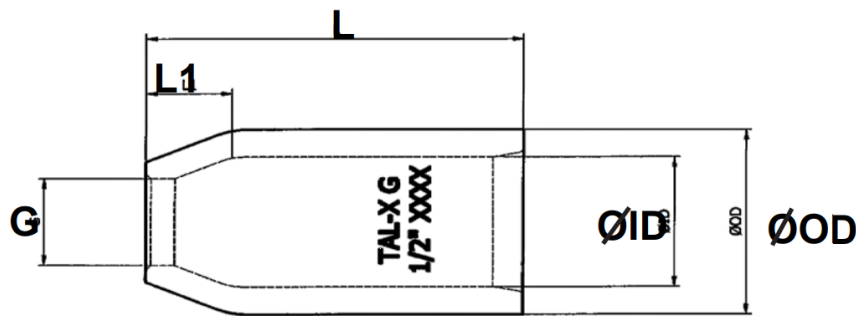
Specifications

- Wire rope terminations will not be adversely affected by temperatures between -40° F to 300° F.
- When properly applied, our sleeves have an efficiency rating of more than 90%. This rating is based on the catalogue strength of wire rope.
- Material is 1010 steel, fine grain.
- Spheroidized annealed for cold swaging.
- TAL-X and TAL-X G sleeves are recommended for use with 6x19 or 6x37, IPS or XIP (EIP), XXIP (EEIP), RRL, FC or IWRC wire rope. Imperial sized wire ropes according to ISO regulations.

For more information and splicing instructions, please contact us
215.230.4260 or info@chantengineering.com



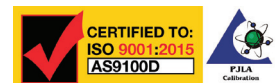
TAL-X Sleeve Size	L	OD	ID	L1	G	OD (After Swaging)	Tolerance	Weight Ea (Approx lbs.)	
B L A C K	1/4"	1"	.66"	.47"	.28"	.31"	.557"	0-0, 012	.05 lbs.
	5/16"	1.5"	.91"	.62"	.44"	.44"	.734"	0-0, 016	.14 lbs.
	3/8"	1.5"	.91"	.66"	.39"	.47"	.734"	0-0, 016	.14 lbs.
	7/16"	2"	1.22"	.85"	.65"	.55"	.99"	0-0, 020	.33 lbs.
	1/2"	2"	1.22"	.91"	.56"	.63"	.99"	0-0, 028	.29 lbs.
	9/16"	2.75"	1.47"	1.03"	.63"	.69"	1.211"	0-0, 028	.64 lbs.
	5/8"	2.75"	1.47"	1.09"	.63"	.75"	1.211"	0-0, 028	.56 lbs.
	3/4"	3.19"	1.72"	1.28"	.84"	.91"	1.431"	0-0, 028	.88 lbs.
7/8"	3.56"	2.03"	1.53"	1"	1.03"	1.64"	0-0, 031	1.31 lbs.	
O X I D I Z E D	1"	4"	2.28"	1.72"	1.13"	1.16"	1st Stage 2.01" 2nd Stage 1.892"	0-0, 031	1.95 lbs.
	1-1/8"	4.81"	2.5"	1.94"	1.25"	1.28"	1st Stage 2.256" 2nd Stage 2.087"	0-0, 035	2.6 lbs.
	1-1/4"	5.19"	2.78"	2.16"	1.41"	1.44"	1st Stage 2.508" 2nd Stage 2.280"	0-0, 035	3.55 lbs.
	1-3/8"	5.81"	3"	2.38"	1.56"	1.56"	1st Stage 2.758" 2nd Stage 2.47"	0-0, 039	4.23 lbs.
	1-1/2"	6.25"	3.25"	2.63"	1.69"	1.69"	1st Stage 3.01" 2nd Stage 2.659"	0-0, 043	4.99 lbs.
	1-3/4"	7.25"	3.84"	3.13"	1.97"	1.94"	1st Stage 3.510" 2nd Stage 3.049"	0-0, 047	8.05 lbs.
	2"	8.5"	4.38"	3.63"	2.25"	2.25"	1st Stage 3.823" 2nd Stage 3.512"	0-0, 047	11.32 lbs.



Chant Engineering is the exclusive North American Distributor for Talurit™ products.

For more information and splicing instructions, please contact us at 215.230.4260 or sales@chantengineering.com

Note: Specifications subject to change without notice. Additional European specifications and ISO 376 European calibration available upon request for international customers.



Chant Engineering Co. Inc. • 59 Industrial Drive, New Britain, PA 18901 • 215.230.4260 • www.chantengineering.com • sales@chantengineering.com